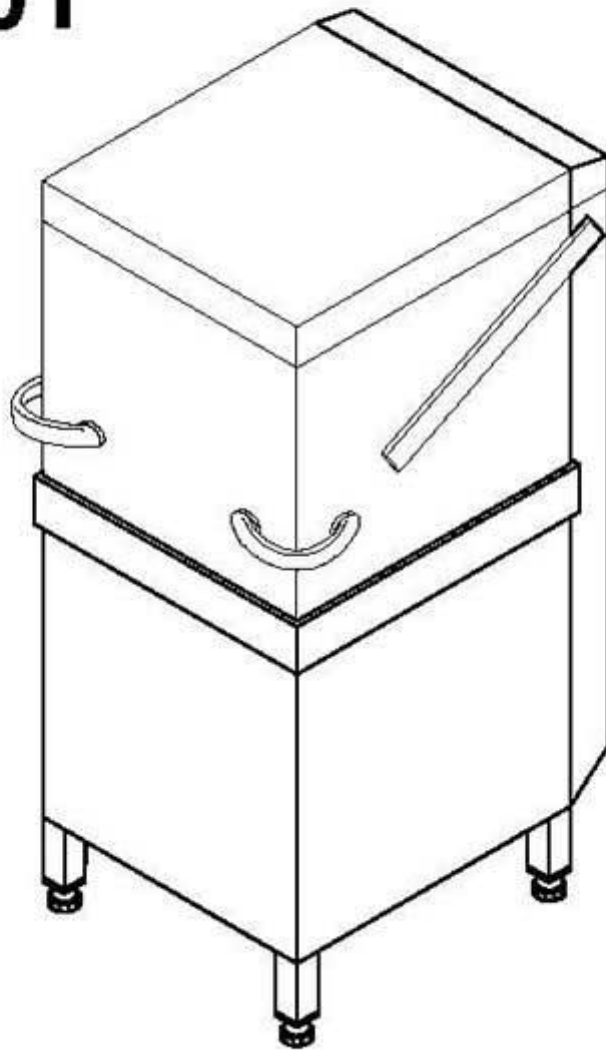


winterhalter

Spare parts list GS 501



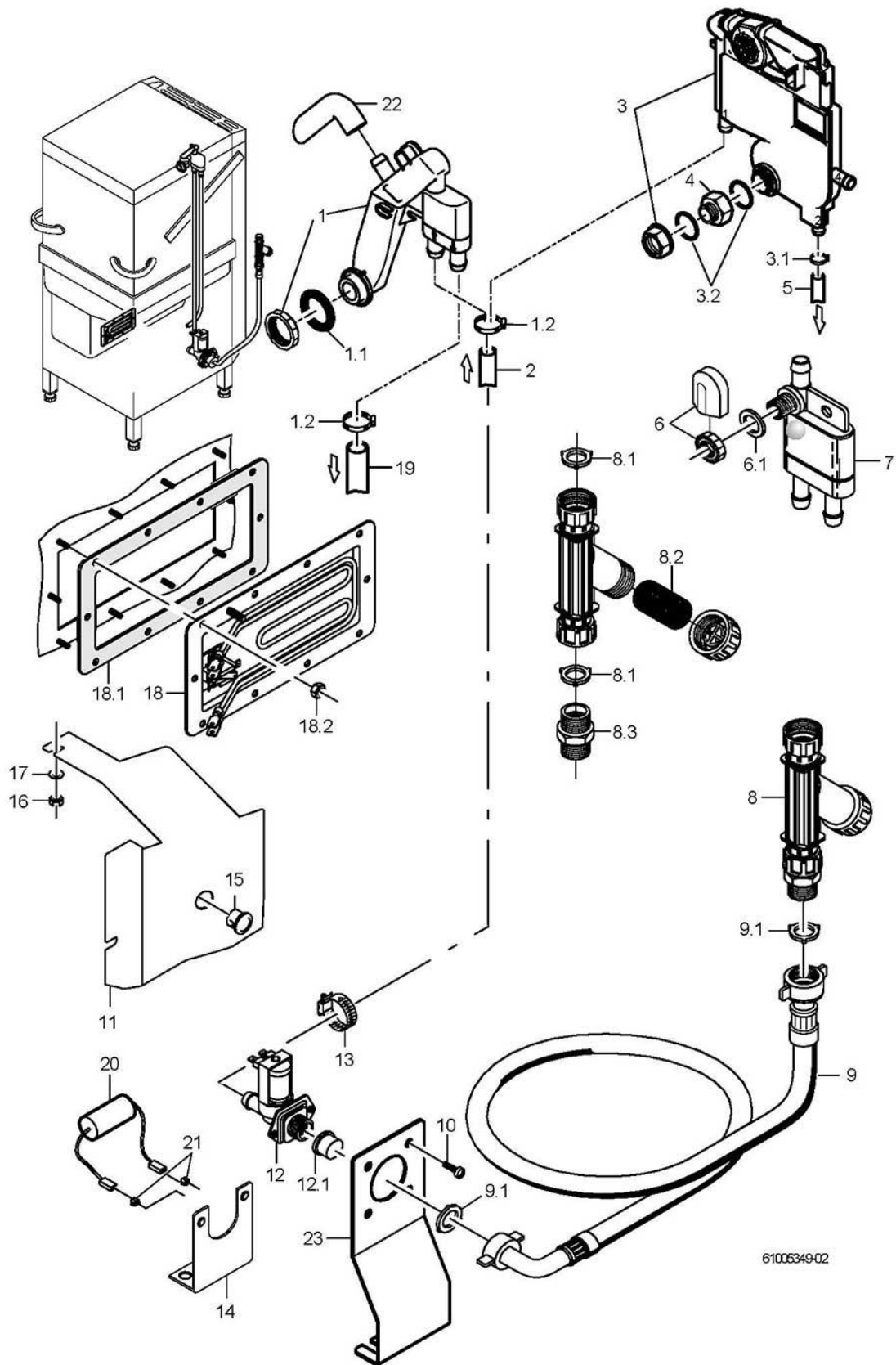
Drawn up: 02.11.99

Processed: 02.09.08

Parts no.: 0

Contents

Water inlet and tank heating	Page 1 - 2
Water inlet (Tundish GB) to machine no.: 470 791	Page 3 - 4
Water drain	Page 5 - 6
Wash pump	Page 7 - 8
Wash system, bottom	Page 9 - 10
Wash system, top to machine no.: 470 791	Page 11 - 12
Rinse system to machine no.: 470 791	Page 13 - 14
Washing/rinsing system From machine no.: 470 792	Page 15 - 16
Pressure boiler	Page 17 - 18
Pressure-independent boiler	Page 19 - 20
Rinse pump	Page 21 - 22
Dosage	Page 23 - 24
Chassis, container and panelling	Page 25 - 26
Hood	Page 27 - 28
Electric parts	Page 29 - 32
Drain pump (optional)	Page 33 - 34

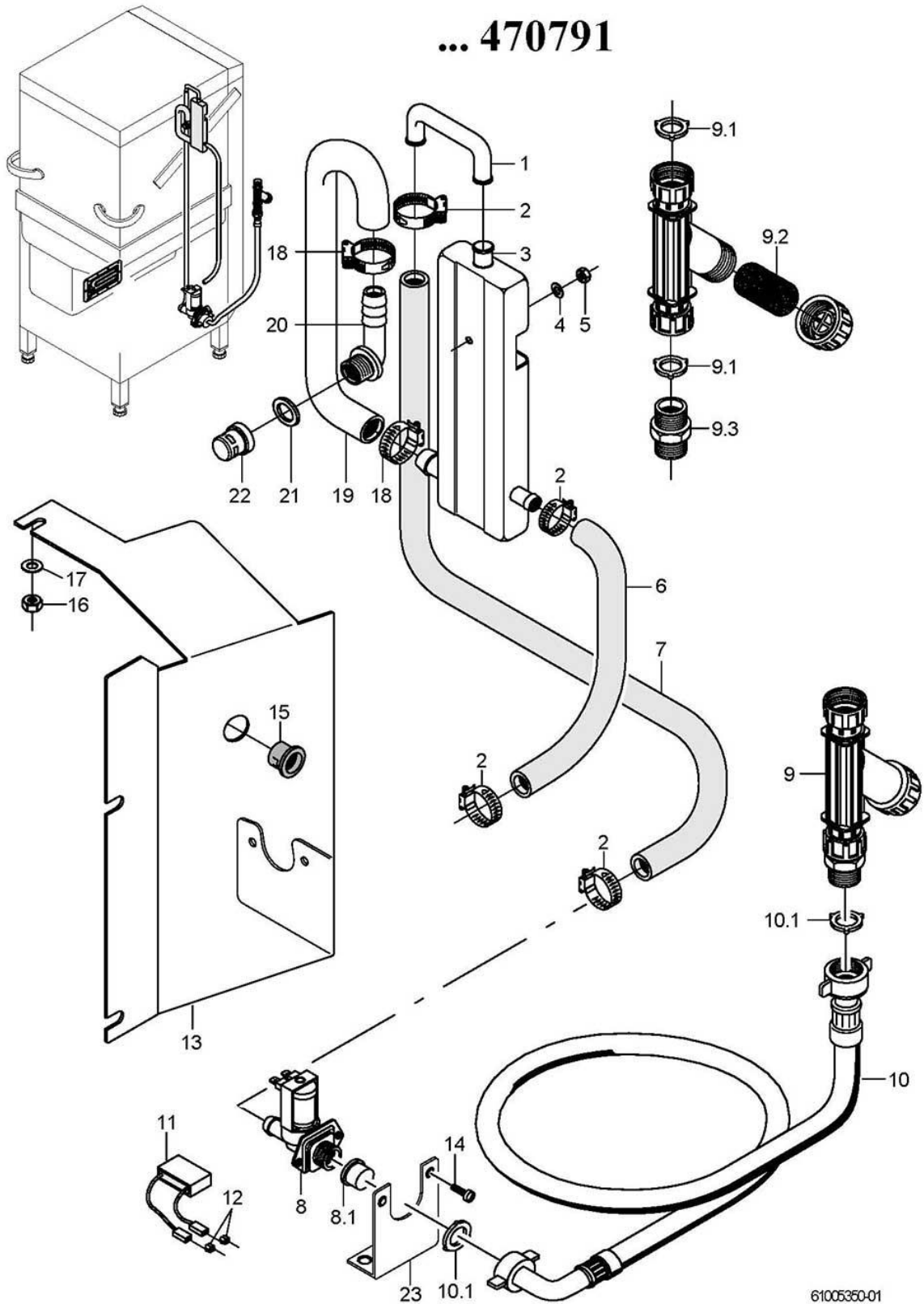


GS 501

Water inlet and tank heating

Item.	Designation	Parts no.:	Pc.	Notes
1	Reverse flow inhibitor kit	60003846		From machine no.: 470 792 Also order: pos. 2+19
1	Separate check valve set	61006616		to machine no.: 545 107; Replacement for WSE set (pos. 3), not for UK and Australia
1.1	O-ring; 24 X 3,0	27 07 087		From machine no.: 470 792
1.2	Hose clamp; D12-22 X 9	28 02 105	2	From machine no.: 470 792
2	Industrial hose; DN13 X 3,5	40 02 035		1430 mm; "By-the-metre" goods
3	Set of WSE without impeller counter	60003511		From machine no.: 470 792; Great Britain; Australia
3.1	Hose clamp; D12-22 X 9	28 02 105	4	
3.2	O-ring; 24 X 3,0	27 07 087	2	
4	Extension; D20 X 21; SW36	61005911		From machine no.: 470 792
5	Shaped hose; DN10 X DN13 X 3,5	61006059		From machine no.: 470 792
6	Tank inlet set	61004545		to machine no.: 470 791
6.1	Gasket; D17 X D24 X 2,0	62001366		to machine no.: 470 791
7	Lateral check valve	35 01 194		to machine no.: 470 791
8	Dirt trap; 150 µM	80002153		incl. item 7.1 – 7.3
8.1	Gasket; D16 X D24 X 3,0	80002241	2	
8.2	Strainer; D27 X 67 X 150µM	80002728		
8.3	Double nipple; G 3/4" X 40; SW30	80002167		
9	Water supply hose; DN13 X 3,5; 2500	40 02 060		incl. item 8.1
9.1	Gasket; D16 X D24 X 3,0	80002241	2	
10	Countersunk screw; M4 X 8	20 10 309	2	
11	Bracket cpl.; 296,71 LG	61004993		up to mach. no. 430 732
12	Solenoid valve flow restrictor 15l; 220-240V/50-60HZ	31 06 180		Pressure boiler
12	Solenoid valve flow restrictor 5l; 220-240V/50-60HZ	31 06 174		Pressure-independent boiler
12	5 l solenoid valve set; 200-240V/50-60HZ/+10%	60004147		Japan; Australia
12	Solenoid valve flow restrictor 8l; 180-220V/50-60HZ	31 06 197		Japan
12.1	Solenoid valve filter	31 06 186		
13	Hose clamp; D12-22 X 9	28 02 105		
14	Bracket; 1,5 X 55 X 86,5	61005765		to machine no.: 545 310
15	Snap-in passage; D23,8	31 10 144		up to mach. no. 430 732
16	Hexagonal nut; M5 SELBSTSICHERND	21 05 302	3	
17	Washer; D5,3 X D15 X 1,2	22 05 301	3	
18	Heating element cpl.; 230V/1	61005231		incl. item 18.1 - 18.2
18	Heating element cpl.; 240V/1	61005230		incl. item 18.1 - 18.2
18	Heating element cpl.; 200V/1	61005229		incl. item 18.1 - 18.2
18.1	Gasket; 1,8 X 94 X 239	82000014		
18.2	Hexagonal nut; M5	21 01 203	10	
19	Industrial hose; DN13 X 3,5	40 02 035		1900 mm; "By-the-metre" goods
20	RC element; 0,15 MICRO F; 3,3 KOHM	31 13 114		Pressure-independent boiler
21	Flat plug; 6,3 X 0,8	31 12 018	2	Pressure-independent boiler
22	Hose elbow 90°; DN12,5X4,0;40X1400	60001610		From machine no.: 545 108
23	Retainer; 1,5 X 55 X 151,77	61006410		From machine no.: 545 311

... 470791

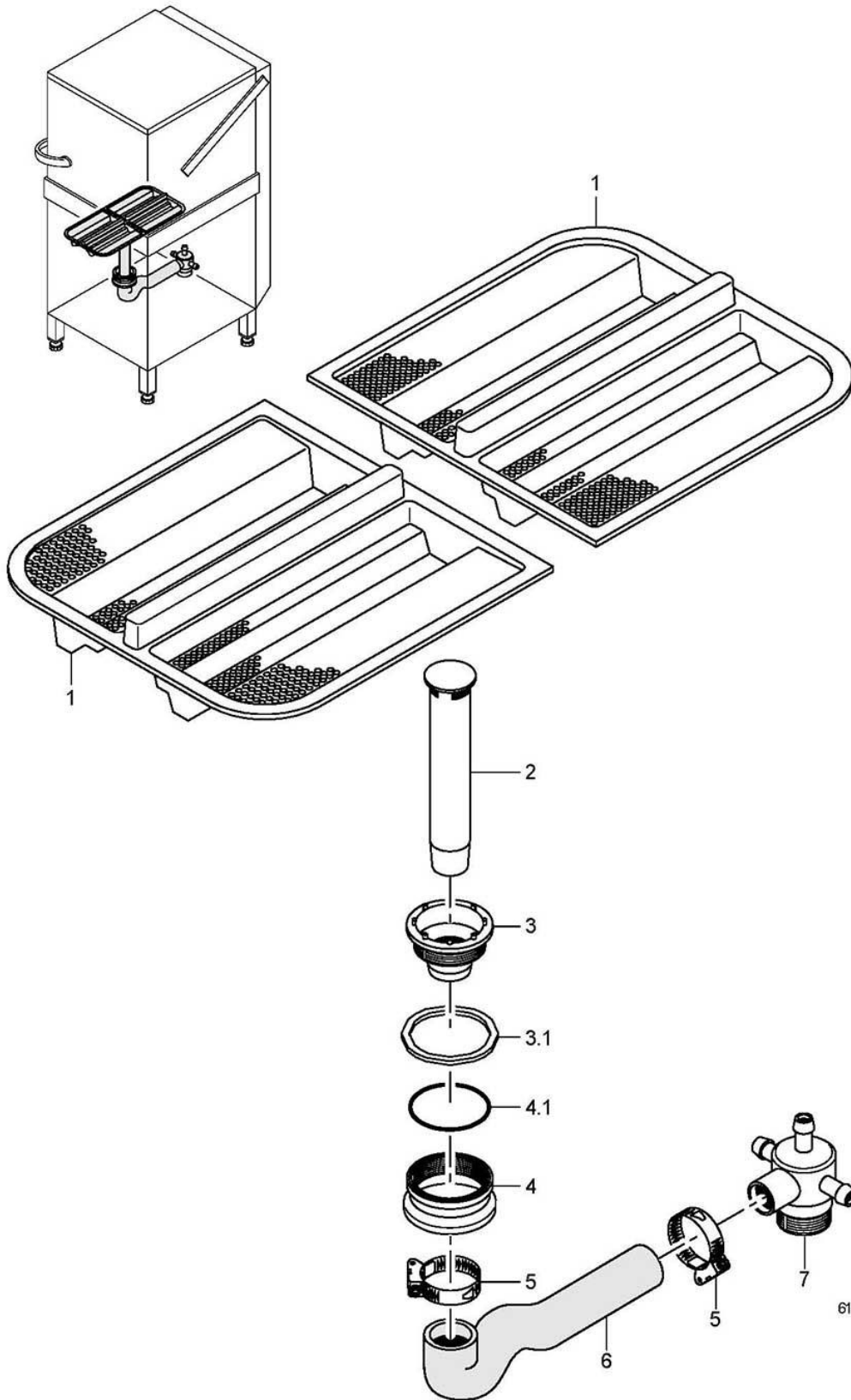


61005350-01

GS 501

Water inlet (Tundish GB) to machine no.: 470 791

Item.	Designation	Parts no.:	Pc.	Notes
1	Pipe elbow; DN12 X DN14 X 2,0	60002507		
2	Hose clamp; D12-22 X 9	28 02 105		
3	Intermediate container; 39 X 131 X 293	60002542		to machine no.: 470 791
4	Washer; D5,3 X D10 X 1,0	22 01 300		
5	Hexagonal nut; M5 SELBSTSICHERND	21 05 302		
6	Hose bend; DN12,5 X 4,0	40 03 050		adapt
7	Industrial hose; DN13 X 3,5	40 02 035		1350 mm; "By-the-metre" goods
8	Solenoid valve flow restrictor 5l; 220-240V/50-60HZ	31 06 174		incl. item 8.1
8	5 l solenoid valve set; 200-240V/50-60HZ/+/-10%	60004147		Japan; Australia
8.1	Solenoid valve filter	31 06 186		
9	Dirty trap; 150 µM	80002153		incl. item 9.1 – 9.3
9.1	Gasket; D16 X D24 X 3,0	80002241	2	
9.2	Strainer; D27 X 67 X 150µM	80002728		
9.3	Double nipple; G 3/4" X 40; SW30	80002167		
10	Water supply hose; DN13 X 3,5; 2500	40 02 060		incl. item 10.1
10.1	Gasket; D16 X D24 X 3,0	80002241	2	
11	RC element; 0,15 MICRO F; 3,3 KOHM	31 13 114		
12	Flat plug; 6,3 X 0,8	31 12 018	2	
13	Bracket cpl.; 296,71 LG	61004993		up to mach. no. 430 732
14	Countersunk screw; M4 X 8	20 10 309	2	
15	Snap-in passage; D23,8	31 10 144		up to mach. no. 430 732
16	Hexagonal nut; M5 SELBSTSICHERND	21 05 302	3	
17	Washer; D5,3 X D15 X 1,2	22 05 301	3	
18	Hose clamp; D24-44 X 12	28 02 309	2	
19	Hose bend; DN25 X 4,0	61004322		
20	Wash distributor cpl.	62002887		adapt
21	Gasket; D26 X D36 X 2,0	27 01 003		
22	Cap; G 3/4" X 24; SW32	61004974		
23	Bracket; 1,5 X 55 X 86,5	61005765		From machine no.: 430 733

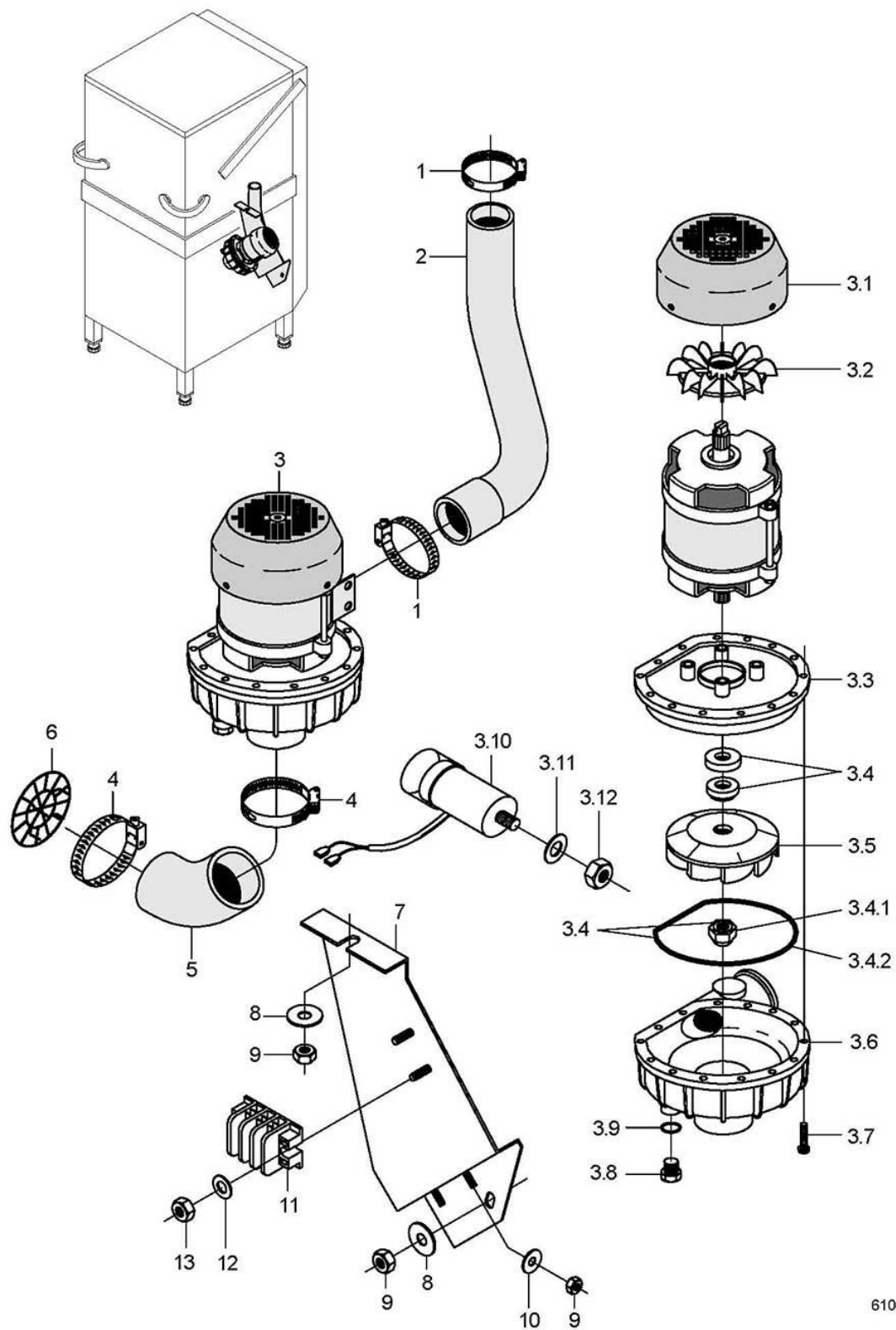


61005351-00

GS 501

Water drain

Item.	Designation	Parts no.:	Pc.	Notes
1	Flat filter; 60 X 273 X 291	61004907	2	
2	Stand pipe; ÜBERLAUFHÖHE 358	61004900		
3	Sump drain set	61006178		incl. item 3.1
3.1	Gasket; D80 X D102 X 2,0	27 01 007		
4	Lock nut; S85 X 4; D104	61005268		incl. item 4.1
4.1	O-ring; 91 X 3,5	27 07 075		
5	Hose clamp; D32-52 X 12	28 02 110	2	
6	Hose bender; DN40 X 4,0	61005182		
7	Mediamat drain; G 1 1/2"; D40	35 01 080		

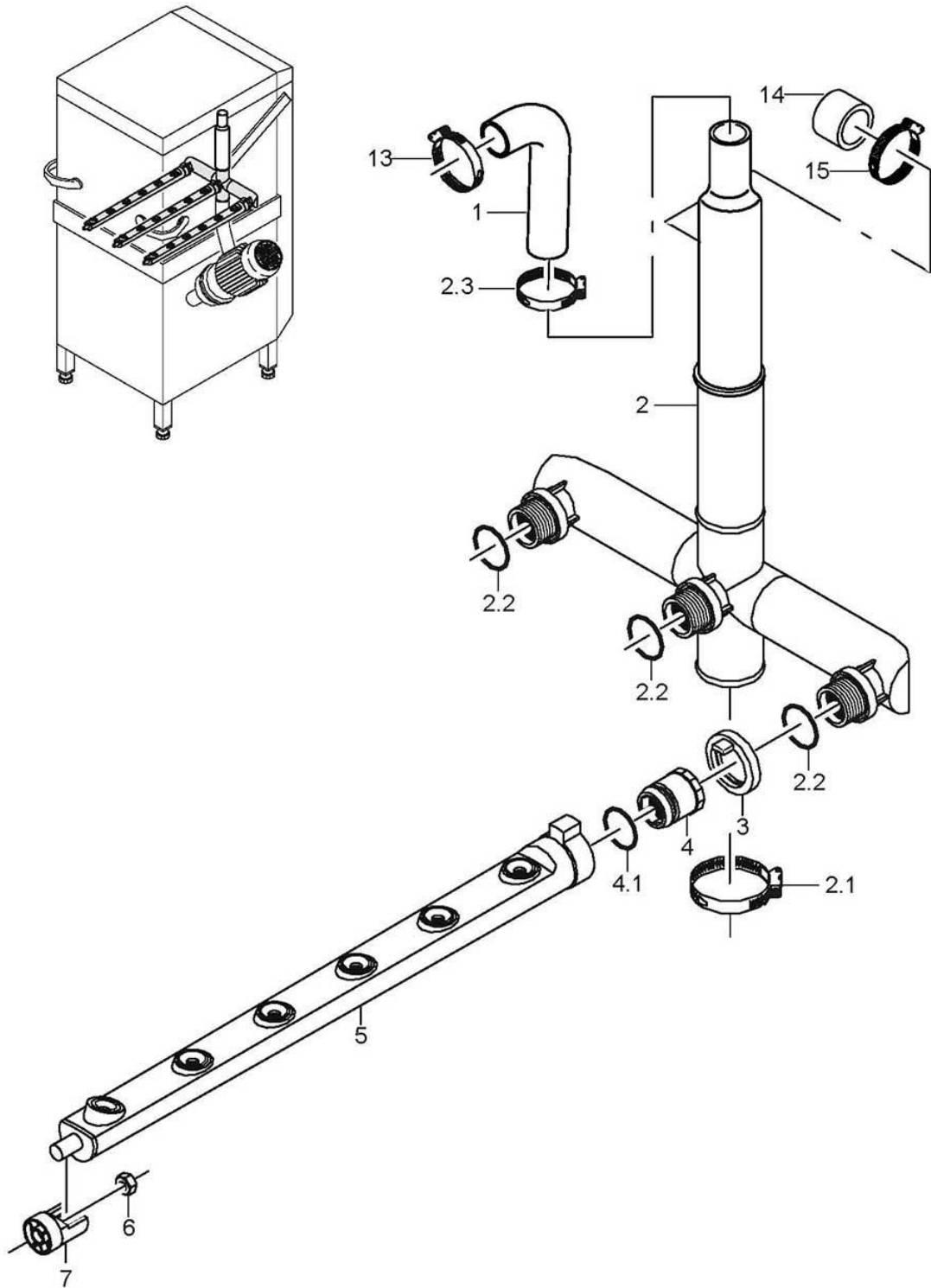


61005352-02

GS 501

Wash pump

Item.	Designation	Parts no.:	Pc.	Notes
1	Hose clamp; D47-67 X 12	28 02 115	2	
2	Reduction elbow; DN50 X DN53	61004904		
3	Pump 0.73 kW 2/0; 230V/1/50HZ	31 02 277		incl. item 3.1 - 3.12
3	Pump 0.73 kW 2/0; 230V/1/60HZ	31 02 092		incl. item 3.1 - 3.12
3	Pump 0.73 kW 2/0; 200V/1/50HZ	31 02 322		incl. item 3.1 - 3.12
3	Pump 0.73 kW 2/0; 200V/1/60HZ	31 02 323		incl. item 3.1 - 3.12
3.1	Fan hood; 0,73 KW	31 02 229		
3.2	Fan blade	31 02 230		
3.3	Flange	31 02 378		
3.4	Gasket set; 1,1/1,7/1,85/0,73 KW	80002670		incl. item 3.4.1, 3.4.2
3.4.1	Cap nut; M8 SELBSTSICHERND	21 10 305		
3.4.2	O-ring; 158,35 X 3,53	31 02 209		
3.5	Pump impeller; D106	31 02 231		for 50 Hz pumps
3.5	Pump impeller; D90; 60HZ	31 02 326		for 60 Hz pumps
3.6	Pump housing	31 02 204		
3.7	Hexagon screw; M4 X 25; 8.8	20 01 020		
3.8	Dummy plug; G 1/2" X 20,5	35 01 108		
3.9	O-ring; 20 X 3,5	27 07 040		
3.10	Capacitor; 20 MIKRO F	31 13 062		
3.11	Spring washer; B8	23 03 301		
3.12	Hexagonal nut; M8	21 01 305		
4	Hose clamp; D62-82 X 12	28 02 137	2	
5	Hose elbow; DN62	61004903		
6	Inline filter; D72	62001956		
7	Bracket cpl.	61005083		
8	Washer; D5,3 X D15 X 1,2	22 05 301	2	
9	Hexagonal nut; M5 SELBSTSICHERND	21 05 302	2	
10	Washer; D5,3 X D10 X 1,0	22 01 300		
11	Distribution bar; 3-POLIG	31 09 011		
12	Washer; D4,3 X D12 X 1,0	22 05 300	2	
13	Hexagonal nut; M4	21 01 302	2	



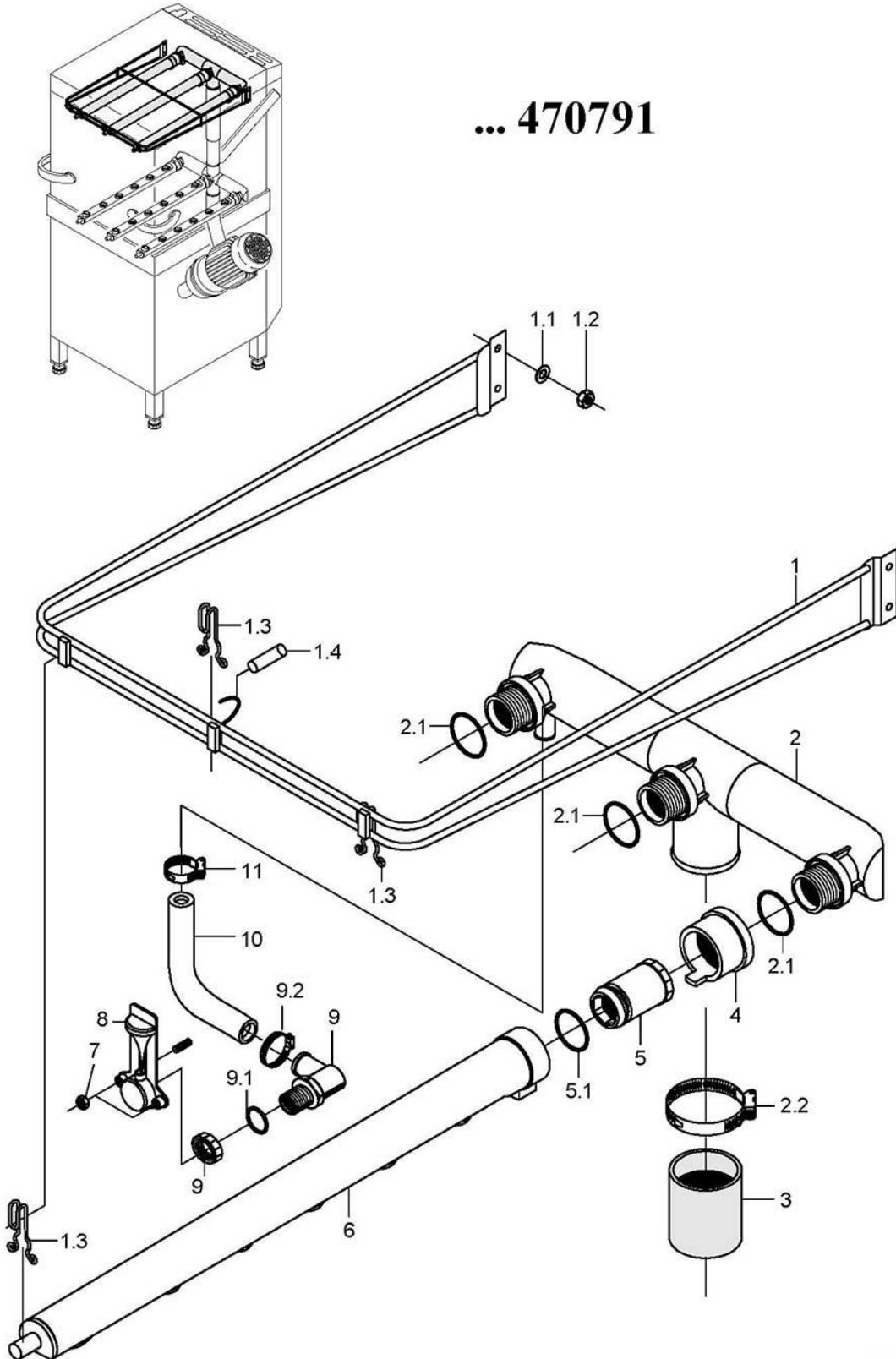
61005353-01

GS 501

Wash system, bottom

Item.	Designation	Parts no.:	Pc.	Notes
1	Hose elbow; DN36 X 6,0; 74 X 214	61005994		adapt
2	Bottom wash distributor cpl.	61005187		to machine no.: 470 791 adapt
2.1	Hose clamp; D47-67 X 12	28 02 115	2	
2.2	O-ring; 29,5 X 4,5	27 07 008	3	
2.3	Hose clamp; D32-52 X 12	28 02 110		
3	Locking ring; D49 X 19,5	60002652	3	
4	Locking nut	60002785	3	incl. item 4.1
4.1	Seal ring; D26 X D32,5 X 5,0	70009122	3	
5	Wash arm cpl.; 6 DÜSEN; 580 LG	61005052	3	
6	Hexagonal nut; M5 SELBSTSICHERND	21 05 302	3	
7	Wash arm holder; D36 X 45,5	61004969	3	
13	Hose clamp; D32-52 X 12	28 02 110		
14	End cap; DN15,5 X 4,0 X 24	61005981		
15	Hose clamp; D20-30 X 12	28 02 109		

... 470791

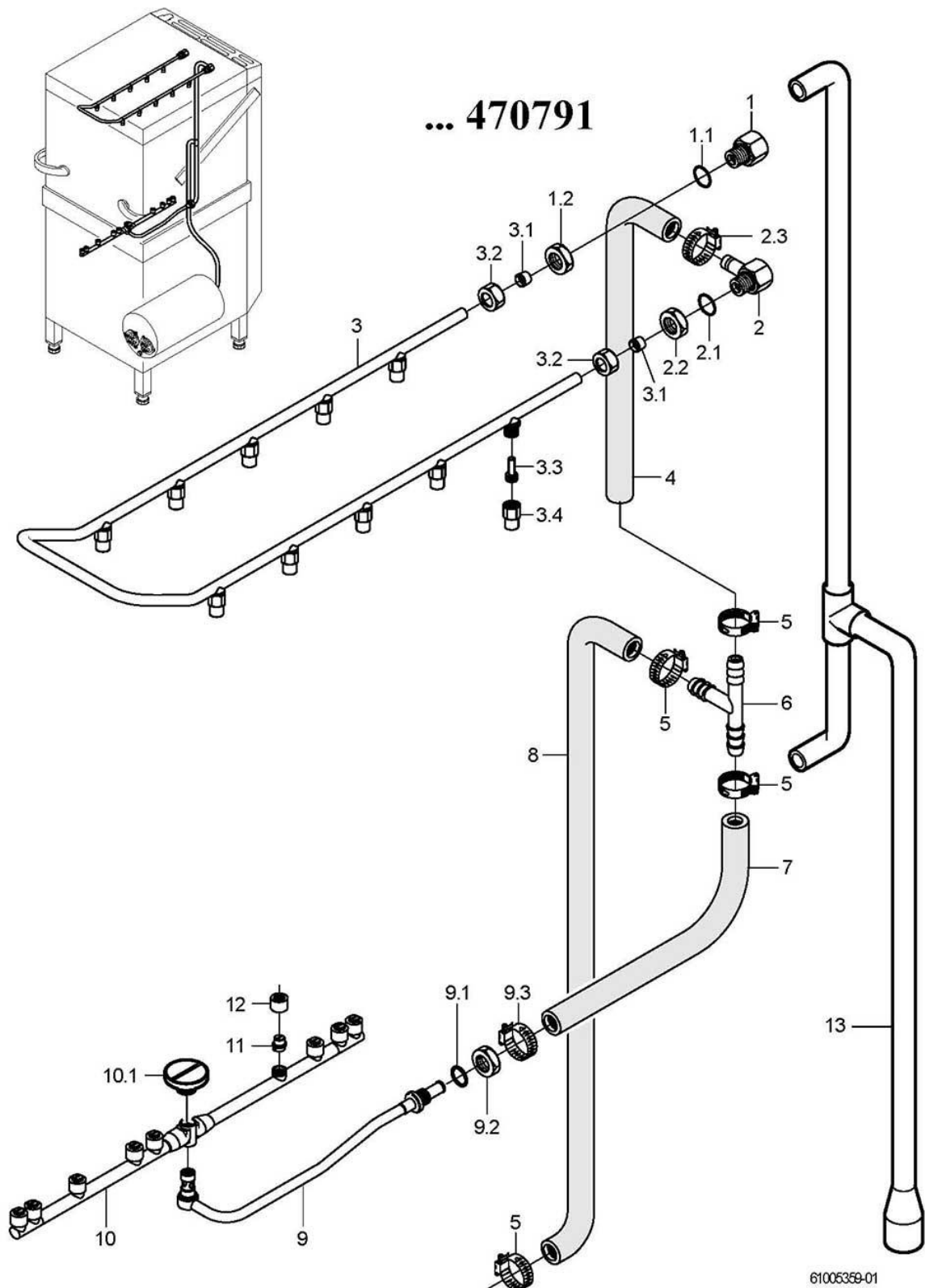


61005354-00

GS 501

Wash system, top to machine no.: 470 791

Item.	Designation	Parts no.:	Pc.	Notes
1	Top wash arm support cpl.	61005188		incl. item 1.1 – 1.3
1.1	Washer; D6,4 X D18 X 1,6	22 05 302	4	
1.2	Hexagonal nut; M6 SELBSTSICHERND	21 05 304	4	
1.3	Spring; D3; 14 X 45 X 68,26	61004885	3	
1.4	Hose; DN5 X 1,5	40 01 024		70 mm; "By-the-metre" goods
2	Wash distributor replacement set	55 28 265		to machine no.: 409 280
2	Top wash distributor cpl.	61005189		From machine no.: 409 281
2.1	O-ring; 29,5 X 4,5	27 07 008	3	
2.2	Hose clamp; D47-67 X 12	28 02 115		
3	Industrial hose; DN50 X 6,0	40 02 006		80 mm; "By-the-metre" goods
4	Locking ring; D49 X 39,5	61004880	3	
5	Locking nut cpl.	61005191	3	incl. item 5.1
5.1	Seal ring; D26 X D32,5 X 5,0	70009122	3	
6	Wash arm cpl.; 6 DÜSEN; 580 LG	61005052	3	
7	Hexagonal nut; M5 SELBSTSICHERND	21 05 302		
8	Ceiling wash jet	61005278		
9	Mediamat inlet set cpl.	55 31 001		incl. item 9.1 – 9.2
9.1	Gasket; D21 X D28 X 2,0	27 09 011		replaced by 55 31 001
9.1	Gasket; D20,5 X D28,5 X 2,0	27 01 002		replaced by 55 31 001
9.1	O-ring; 20 X 3	27 07 031		
9.2	Hose clamp; D20-30 X 12	28 02 109		
10	Hose elbow 90°; DN16 X 4,0; 70 X 145,5	61005272		
11	Hose clamp; D20-30 X 12	28 02 109		

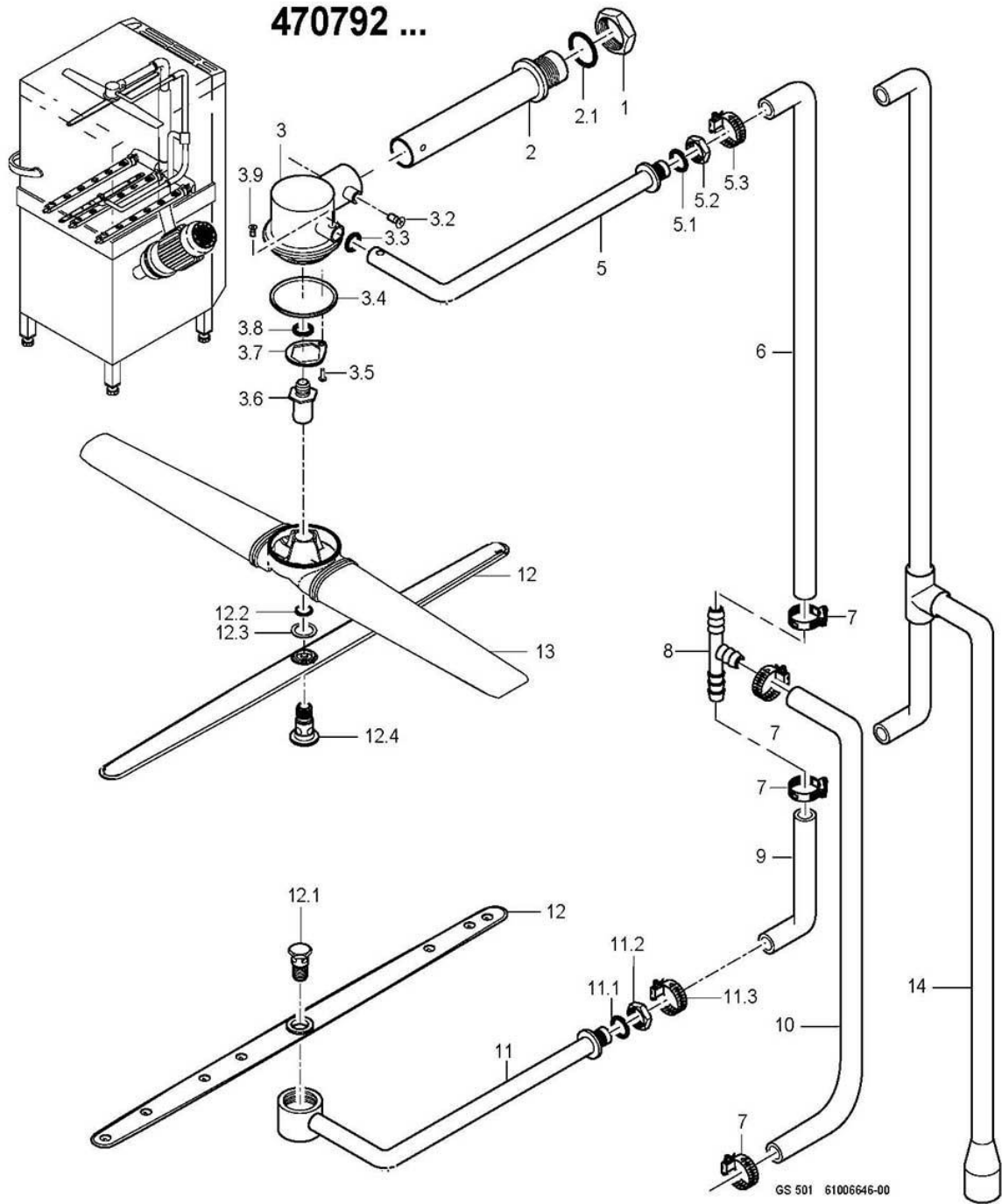


GS 501

Rinse system to machine no.: 470 791

Item.	Designation	Parts no.:	Pc.	Notes
1	Nipple cpl.	61005194		incl. item 1.1 - 1.2
1.1	O-ring; 20 X 3,5	27 07 040	1	
1.2	Hexagonal nut; G 1/2" X 6,0; SW32	61005721		
2	Nipple cpl.	61005195		incl. item 2.1 – 2.3
2.1	O-ring; 20 X 3,5	27 07 040	1	
2.2	Hexagonal nut; G 1/2" X 6,0; SW32	61005721		
2.3	Hose clamp; D12-22 X 9	28 02 105		
3	Ring pipeline cpl.	61005196		incl. item 3.1 – 3.4
3	Ring pipeline cpl.	61005197		incl. item 3.1 – 3.4 ; glass rinsing kit
3.1	Cutting ring; D12 X 10	29 07 304	2	
3.2	Union nut; G 1/2" X D12,2; SW24	29 07 301	2	
3.3	Spray jet swirl; D8 X 18,8	65002764	10	
3.4	Spray jet cap; D14,6 X 21	65002765	10	
4	Hose bend; DN12,5 X 4,0	40 03 050		adapt
5	Hose clamp; D12-22 X 9	28 02 105		
5	Hose clamp; D24-44 X 12	28 02 309		Pressure-independent boiler
6	Hose T-connecting piece; D15 X D15 X D15	70010598		
7	Hose bend; DN12,5 X 4,0	40 03 050		adapt
8	Industrial hose; DN13 X 3,5	40 02 035		800 mm; "By-the-metre" goods
9	Revolving arm holder cpl.	61005198		incl. item 9.1 – 9.3
9.1	O-ring; 20 X 3,5	27 07 040		
9.2	Hexagonal nut; G 1/2" X 8,0; SW27	30 09 201		
9.3	Hose clamp; D12-22 X 9	28 02 105		
10	Revolving rinse arm kit; 7 DÜSEN	61006244		
10.1	Screw cap; M10 X D7,8 X D24	61005681		
11	Fan jet, size 5; D11,2 X 10	62002820	9	
12	Union nut; M14 X D9,1; D17	62002812	9	
13	Rinse manifold	61006333		

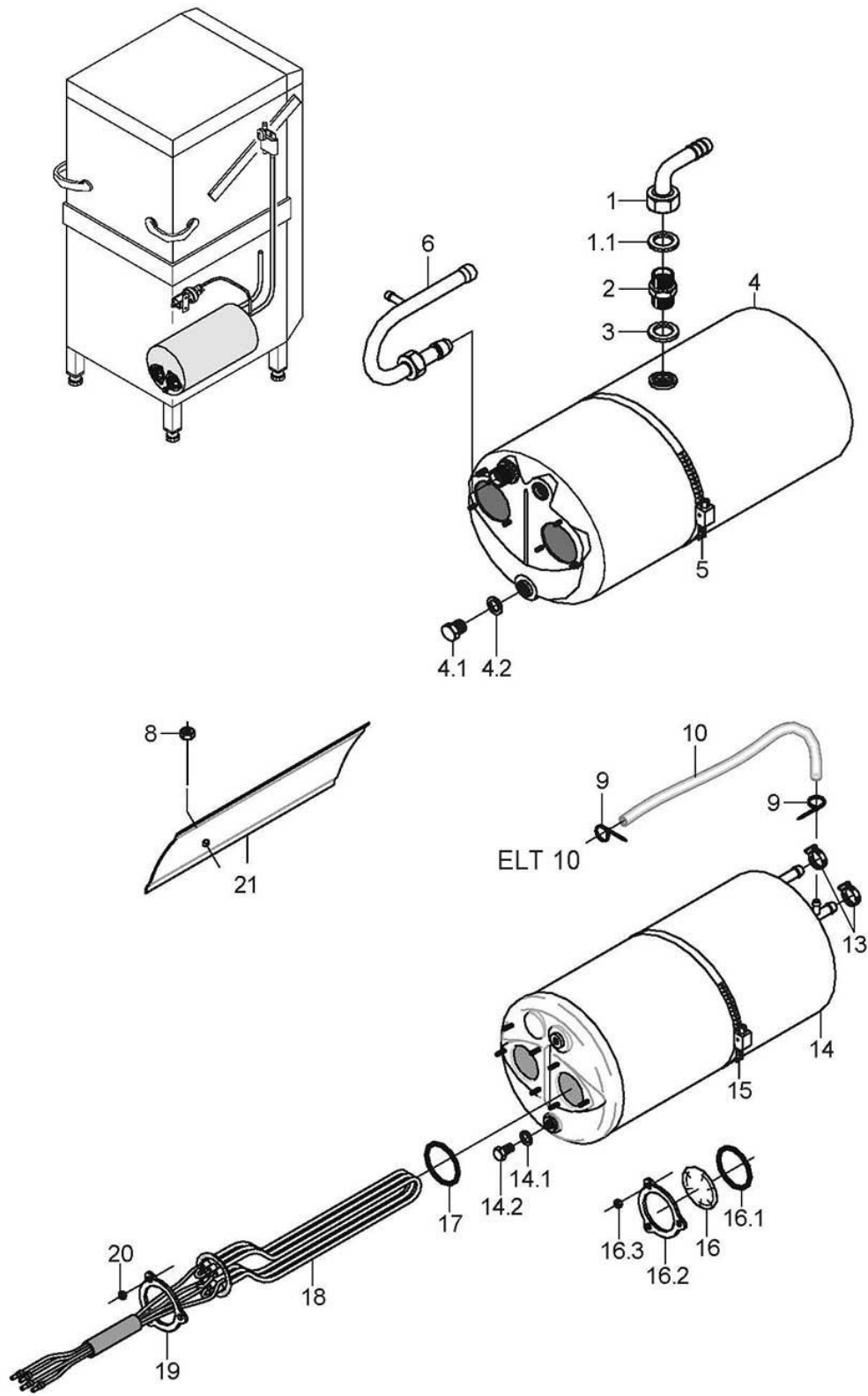
470792 ...



GS 501

Washing/rinsing system From machine no.: 470 792

Item.	Designation	Parts no.:	Pc.	Notes
1	Hexagon nut; G1 1/4" X 11,5; SW50	61005976		
2	Wash pipe assembly	61006064		
2.1	O-ring; 42 X 3	27 07 073		incl. item 2.1
3	Revolving arm kit	61006065		incl. item 3.1 - 3.9
3.2	PT screw; KA 50 X 13	20 17 306	2	
3.3	O-ring; 12 X 1,5	27 07 072		
3.4	Seal ring; D53,4 X D57,8 X 2,0	60003021		
3.5	Sheet metal screw; ST 3,5 X 9,5	20 20 305		
3.6	Revolving arm socket; D7,9 X 45,7; M12	61006241		
3.7	Washer; 1,5 X 28 X 32,3	61006076		
3.8	O-ring; 10 X 2,0	27 07 080		
3.9	Sheet metal screw; ST 2,9 X 6,5	20 20 308		
5	Rinse inlet set	61006066		incl. item 5.1 – 5.3
5.1	O-ring; 20 X 3,5	27 07 040		
5.2	Hexagonal nut; G 1/2" X 8,0; SW27	30 09 201		
5.3	Hose clamp; D14-22 X 12	28 02 138		
6	Hose bend; DN12,5 X 4,0	40 03 050		Pressure boiler
7	Hose clamp; D12-22 X 9	28 02 105		
8	Hose T-connecting piece; D15 X D15 X D15	70010598		
9	Hose bend; DN12,5 X 4,0	40 03 050		Pressure boiler
10	Industrial hose; DN13 X 3,5	40 02 035		800 mm; Metre item; pressure boiler
11	Revolving arm kit	61006067		incl. item 11.1 - 11.3
11.1	O-ring; 20 X 3,5	27 07 040		
11.2	Hexagonal nut; G 1/2" X 8,0; SW27	30 09 201		
11.3	Hose clamp; D14-22 X 12	28 02 138		
12	Rinsing wash arm set; 7 DÜSEN	60003515		incl. item 12.1 - 12.6
12.1	Revolving arm screw; M12 X 30; SW19	60003045		no longer deliverable; up to mach. no.: 496 938 replaced by 60003515
12.1	Rotary arm screw; M12 X 36; SW19	60004123		From machine no.: 496 939
12.2	Locking ring; D12 X 0,8	60003023		
12.3	Washer; D14,10 X D20 X 1,0	60003487		
12.4	Revolving arm screw; M12 X 32,3; D25	60003821		no longer deliverable; up to mach. no.: 496 938 replaced by 60003515
12.4	Rotary arm screw; M12 X 34,9; D35	60004125		From machine no.: 496 939
13	Set of rotary arms washing	60003520		
14	Rinse manifold	61006333		Pressure-independent boiler

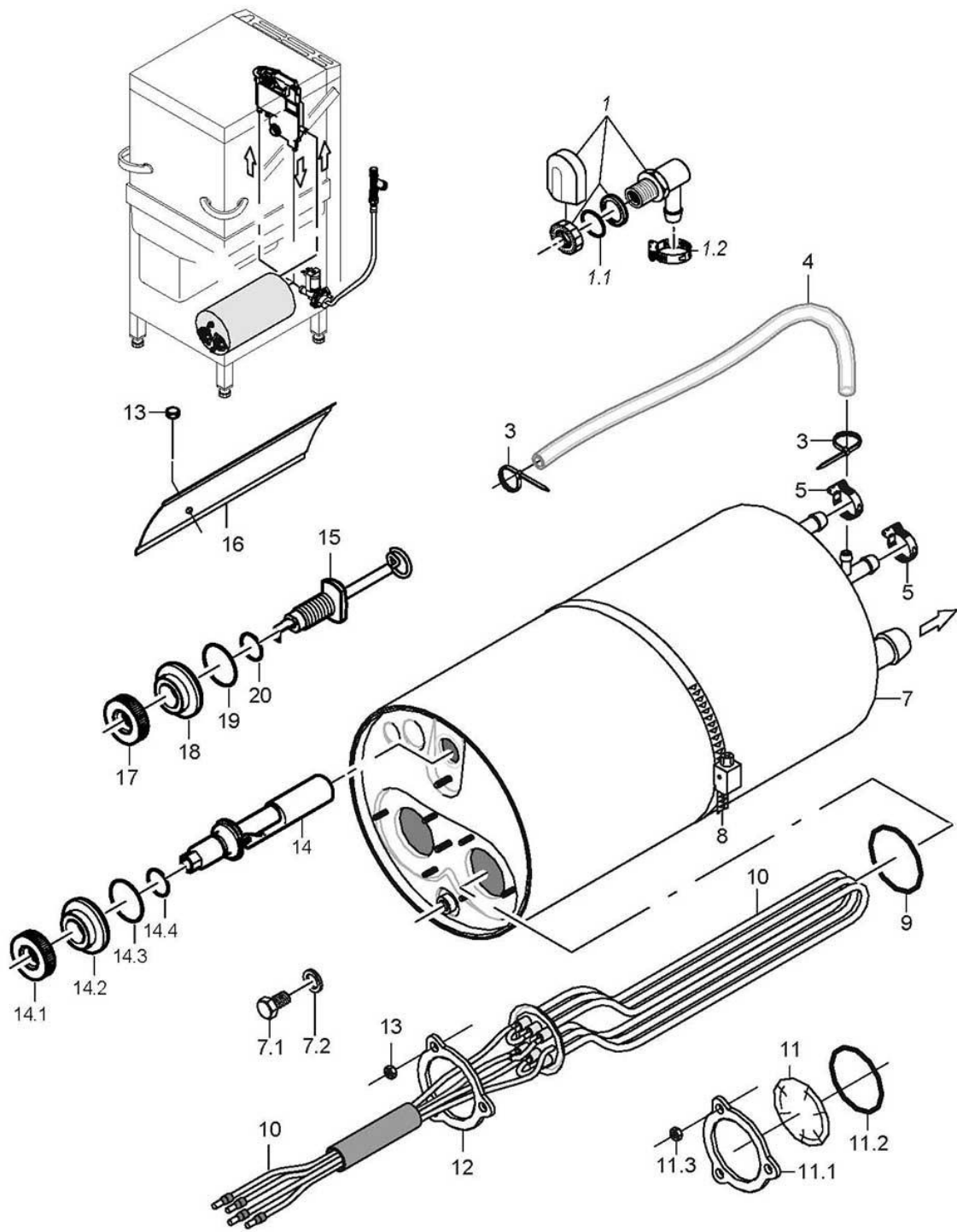


61005356-01

GS 501

Pressure boiler

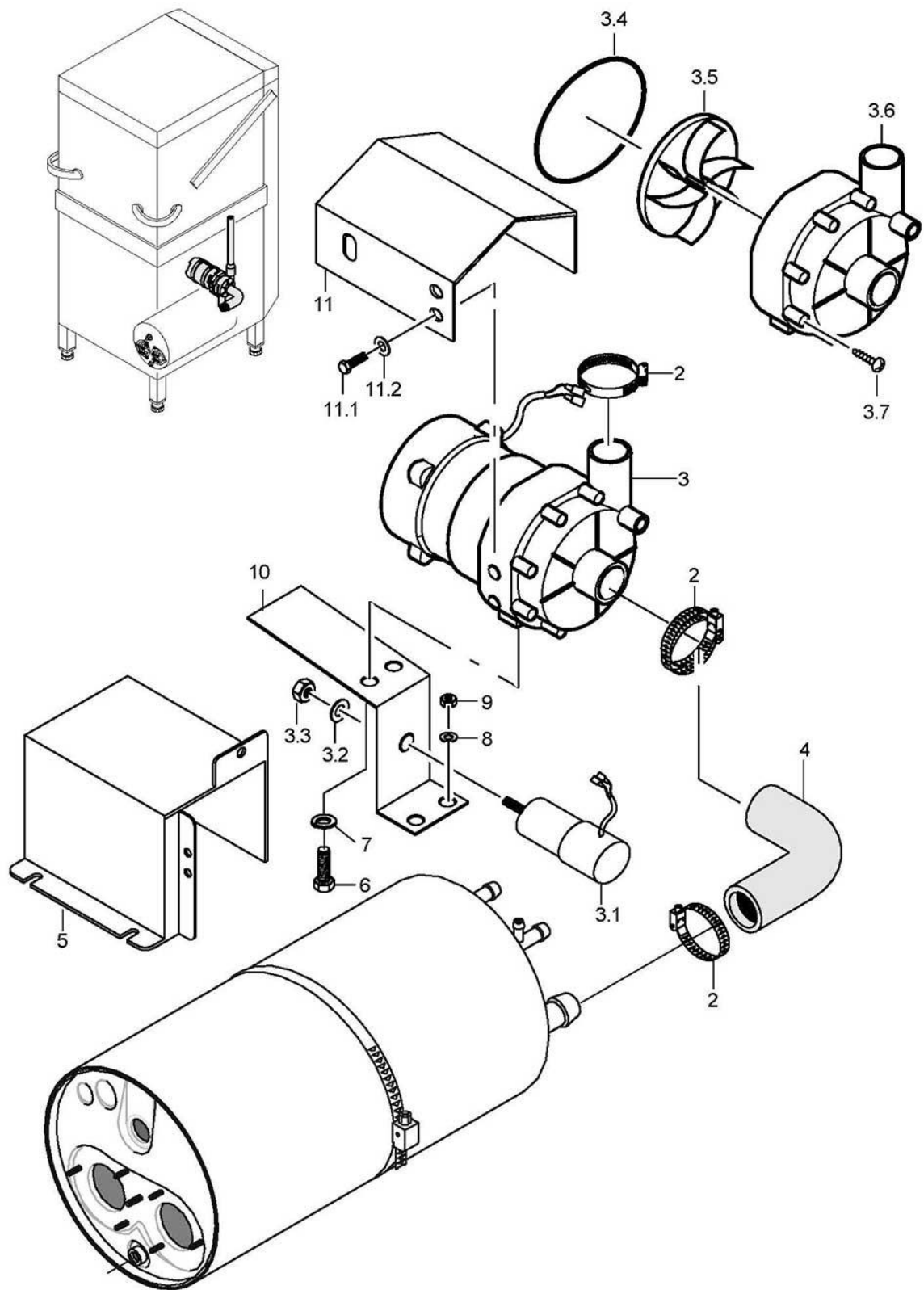
Item.	Designation	Parts no.:	Pc.	Notes
1	Hose nipple, angled; D18	60002474		incl. item 1.1 to machine no.: 431 163
1.1	Gasket; D16 X D24 X 3,0	80002241		
2	Reducing nipple; G 1/2" X G 3/4"; SW27	61003430		to machine no.: 431 163
3	Gasket; D21 X D28 X 2,0	27 09 011		to machine no.: 431 163
4	Boiler compl.	61005192		incl. item 4.1 - 4.3 For installation see item 14
4.1	Hexagon screw; M10 X 16; A70	20 01 352		to machine no.: 431 163
4.2	Gasket; D10 X D18 X 1,5	27 03 003		to machine no.: 431 163
4.3	Locking screw; M9 X 1 X 14	70003890		to machine no.: 431 163
5	Hose clamp; D50-215 X 12	28 02 126		
6	Boiler inlet elbow, cpl.	55 09 054		incl. item 6.1 - 6.2 to machine no.: 431 163
6.1	Cutting ring; D12 X 10	29 07 300		to machine no.: 431 163
6.2	Union nut; G 1/2" X D12,2; SW24	29 07 201		to machine no.: 431 163
8	Ratchet nut; M5	21 01 310	3	
9	Cable tie; 100 X 2,5	31 20 175		
10	Hose; DN5 X 1,5	40 01 024		700 mm; "By-the-metre" goods
13	Hose clamp; D12-22 X 9	28 02 105		
14	Boiler compl.	61005192		incl. item 14.1 – 14.2
14.1	Gasket; D10 X D18 X 1,5	27 03 003		
14.2	Hexagon screw; M10 X 16; A70	20 01 352		
15	Hose clamp; D50-215 X 12	28 02 126		
16	Blind flange	60002787		incl. item 16.1 – 16.3
16.1	O-ring; 43 X 7,0	27 07 088		
16.2	Locking washer; D43 X D80 X 4,0	01 17 003		
16.3	Hexagonal nut; M5	21 01 203	3	
17	O-ring; 43 X 7,0	27 07 088	2	
18	6.0 kW heating element with fuse; 3 X 400V	31 03 150		
18	6.0 kW heating element with fuse; 3 X 420V	31 03 152		
18	6.0 kW heating element with fuse; 3 X 230V	31 03 158		
18	6.0 kW heating element with fuse; 3 X 200V	31 03 151		
18	6.0 kW heating element with fuse; 3 X 440V	31 03 153		
19	Locking washer; D43 X D80 X 4,0	01 17 003		
20	Hexagonal nut; M5	21 01 203		
21	Thermostat clamp; 0,8 X 28 X 50	55 19 011		to machine no.: 423 783
21	Clamping plate; 0,8 X 39,48 X 210	61005444		From machine no.: 423 784



61006357-04

GS 501**Pressure-independent boiler**

Item.	Designation	Parts no.:	Pc.	Notes
1	Water inlet, 3-part set	55 31 007		to machine no.: 470 791
1.1	Gasket; D21 X D28 X 2,0	27 09 011		replaced by 55 31 007
1.1	Gasket; D20,5 X D28,5 X 2,0	27 01 002		replaced by 55 31 007
1.1	O-ring; 20 X 3	27 07 031		
1.2	Hose clamp; D12-22 X 9	28 02 105		
2	Industrial hose; DN13 X 3,5	40 02 035		to machine no.: 470 791 "By-the-metre" goods 1500 mm;
2	Hose elbow 90°; DN12,5 X 4,0;30 X 1080	61005784		From machine no.: 470 792
3	Cable tie; 100 X 2,5	31 20 175	3	
4	Hose; DN5 X 1,5	40 01 024		700 mm; "By-the-metre" goods
5	Hose clamp; D12-22 X 9	28 02 105		
7	Pressureless boiler cpl.	61005193		to machine no.: 479 002
7	Pressure-independent boiler	61006113		From machine no.: 479 003
7.1	Hexagon screw; M10 X 16; A70	20 01 352		
7.2	Gasket; D10 X D18 X 1,5	27 03 003		
8	Hose clamp; D50-215 X 12	28 02 126		
9	O-ring; 43 X 7,0	27 07 088	2	
10	6.0 kW heating element with fuse; 3 X 400V	31 03 150		
10	6.0 kW heating element with fuse; 3 X 420V	31 03 152		
10	6.0 kW heating element with fuse; 3 X 420V	31 03 182		Australia
10	3 kW heating element with fuse; 3 X 420V	31 03 183		Australia
10	6.0 kW heating element with fuse; 3 X 230V	31 03 158		
10	6.0 kW heating element with fuse; 3 X 200V	31 03 151		
10	6.0 kW heating element with fuse; 3 X 440V	31 03 153		
11	Blind flange	60002787		incl. item 11.1 - 11.3
11.1	Locking washer; D43 X D80 X 4,0	01 17 003		
11.2	O-ring; 43 X 7,0	27 07 088		
11.3	Hexagonal nut; M5	21 01 203	3	
12	Locking washer; D43 X D80 X 4,0	01 17 003		
13	Ratchet nut; M5	21 01 310	3	
14	Floating switch installation set	55 28 255		
14.2	Ring; D14,3 X D32 X 11	60003872		
14.1	Nut; M14 X 2, D26,8 X 8	60003989		
14.3	O-ring; 23 X 3,5	27 07 093		
14.4	O-ring; 11,11 X 1,78	27 07 079		
15	Floating switch installation set	55 28 255		Replacement for: 5528292 (Built-in electrode)
15.1	Nut; M14 X 2, D26,8 X 8	60003989		
15.2	Ring; D14,3 X D32 X 11	60003872		
15.3	O-ring; 24 X 3,0	27 07 087		
15.4	O-ring; 11,11 X 1,78	27 07 079		
16	Thermostat clamp; 0,8 X 28 X 50	55 19 011		to machine no.: 423 783
16	Clamping plate; 0,8 X 39,48 X 210	61005444		From machine no.: 423 784
17	Nut; M14 X 2, D26,8 X 8	60003989		
18	Ring; D14,3 X D32 X 11	60003943		
19	O-ring; 24 X 3,0	27 07 087		
20	O-ring; 11,11 X 1,78	27 07 079		
o.P.	Boiler conversion set 12 kW; 3 X 400V	55 28 266		
o.P.	Boiler conversion set 12 kW; 3 X 420V	55 28 267		
o.P.	Boiler conversion set 12 kW; 3 X 230V	55 28 268		
o.P.	Boiler conversion set 12 kW; 3 X 200V	55 28 269		

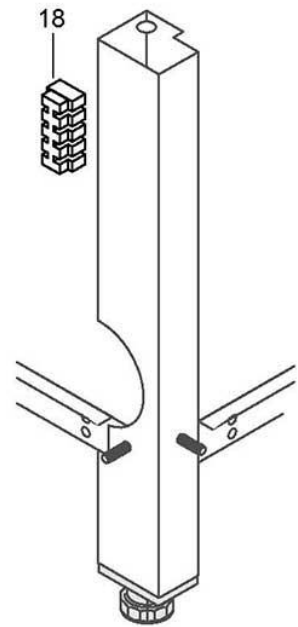
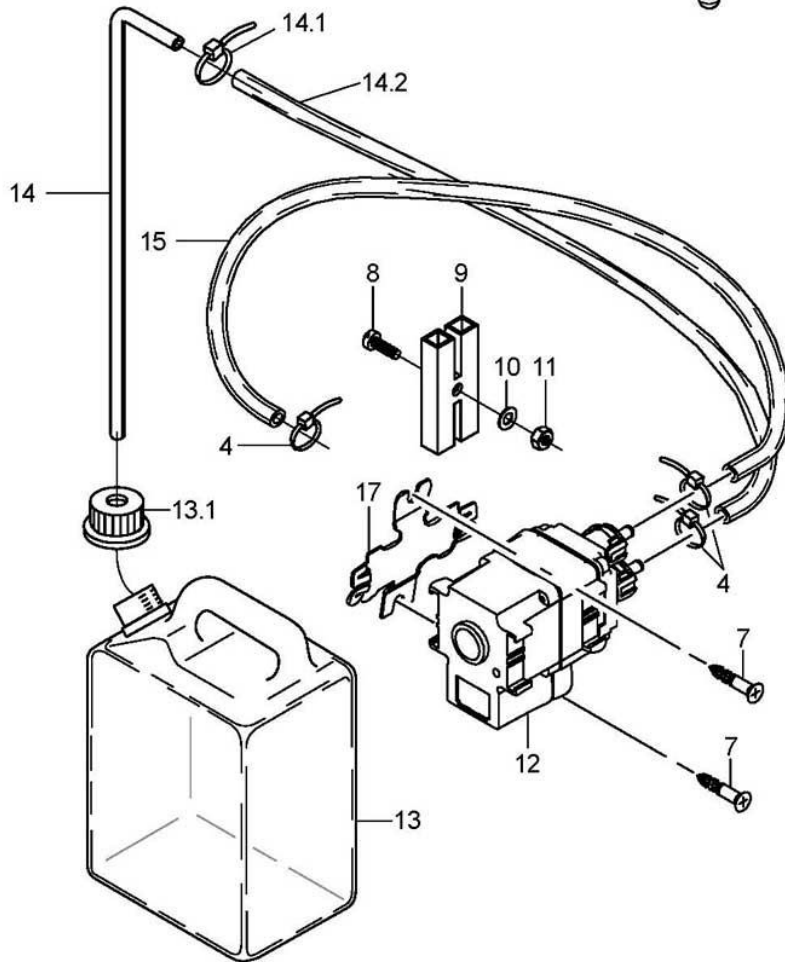
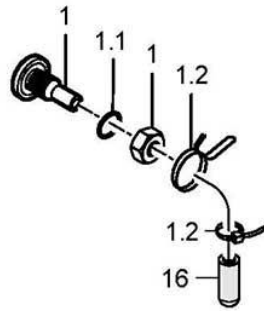
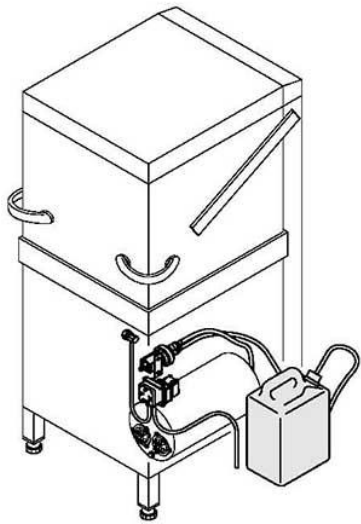


61005358-00

GS 501

Rinse pump

Item.	Designation	Parts no.:	Pc.	Notes
2	Hose clamp; D24-36 X 12	28 02 111		
3	Pump 0.270 kW 8/0; 220/240V/1/50HZ	31 02 477		Repair recommended only for pump housings with 7 screws
3	Pump 0.270 kW 8/0; 200V/1/50HZ	31 02 446		Repair recommended only for pump housings with 7 screws
3	Pump 0.270 kW 8/0; 200V/1/60HZ	31 02 447		Repair recommended only for pump housings with 7 screws
3	Pump 0.270 kW 8/0; 220/240V/1/60HZ	31 02 445		Repair recommended only for pump housings with 7 screws
3.1	Capacitor; 5 MIKRO F	31 13 099		
3.2	Spring washer; B8	23 03 301		
3.3	Hexagonal nut; M8	21 01 305		
3.4	Cord; D=78 X 3; SHOR 50-55;	40 04 023		
3.5	Pump impeller; FÜR UP60/UP30 MIT 50HZ	31 02 466		50 Hz
3.5	Pump impeller, installed; FÜR UP60 MIT 60HZ	31 02 587		60 Hz
3.6	Pump housing; D=80,5MM	31 02 519		
3.7	Screw for pump housing	31 01 118	7	
4	Hose elbow 90°; DN25X4,0;80X130	80001902		to machine no.: 430 228
4	Hose bend; DN25 X 4,0	61005703		From machine no.: 430 229
5	Conversion kit for repositioning rinse pump	55 28 274		to machine no.: 430 228
6	Hexagon screw, M6 X 10; A70	20 01 332		
7	Spring washer; B6	23 03 300		
8	Washer; D5,3 X D15 X 1,2	22 05 301	2	
9	Hexagonal nut; M5 SELBSTSICHERND	21 05 302	2	
10	Bracket; 2,0 X 45 X 177,5	61005696		From machine no.: 430 229
11	Guard plate	80002255		From machine no.: 430 229
11.1	Hexagon screw, M6 X 10; A70	20 01 332	2	
11.2	Spring washer; B6	23 03 300	2	

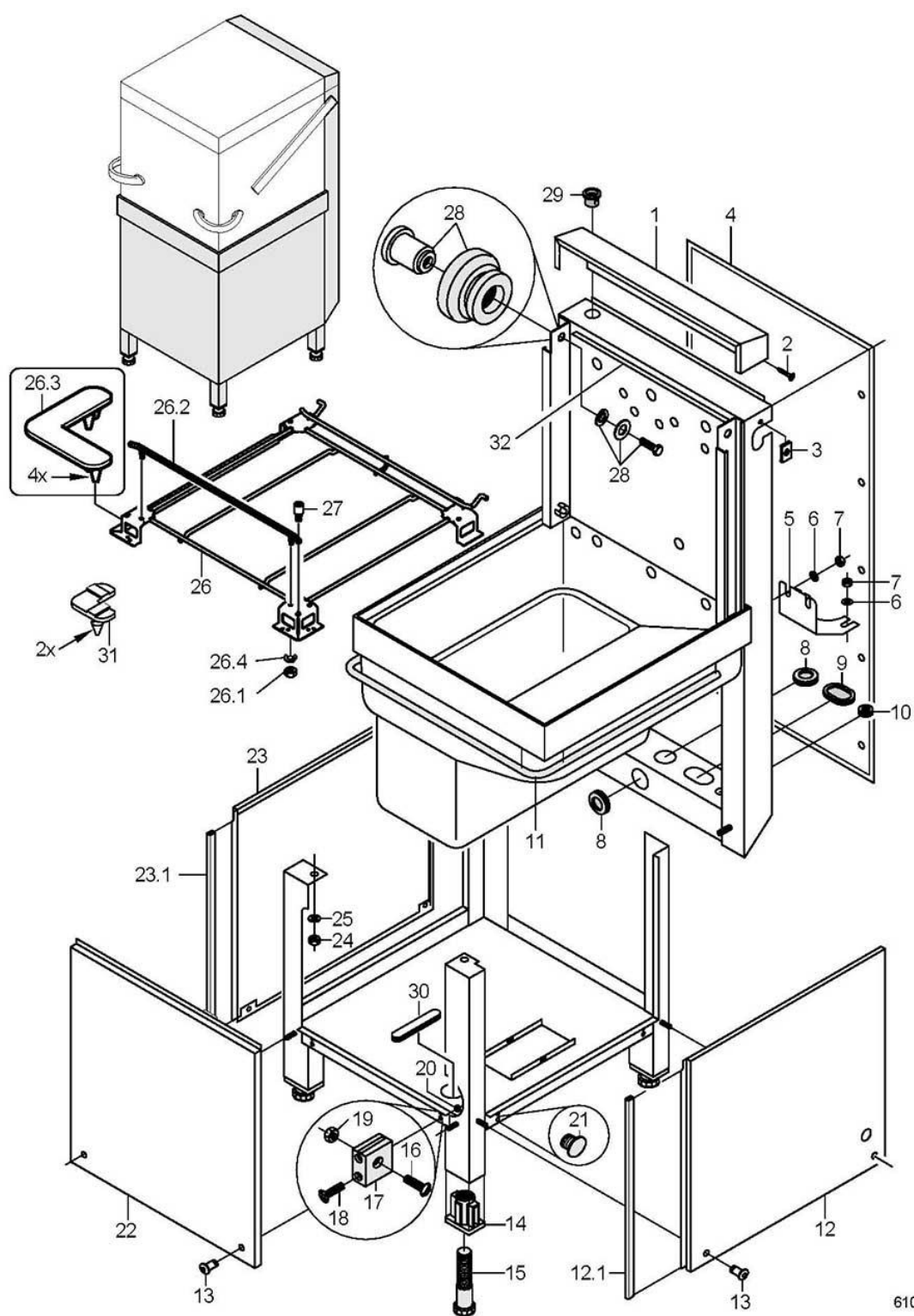


61005360-00

GS 501

Dosage

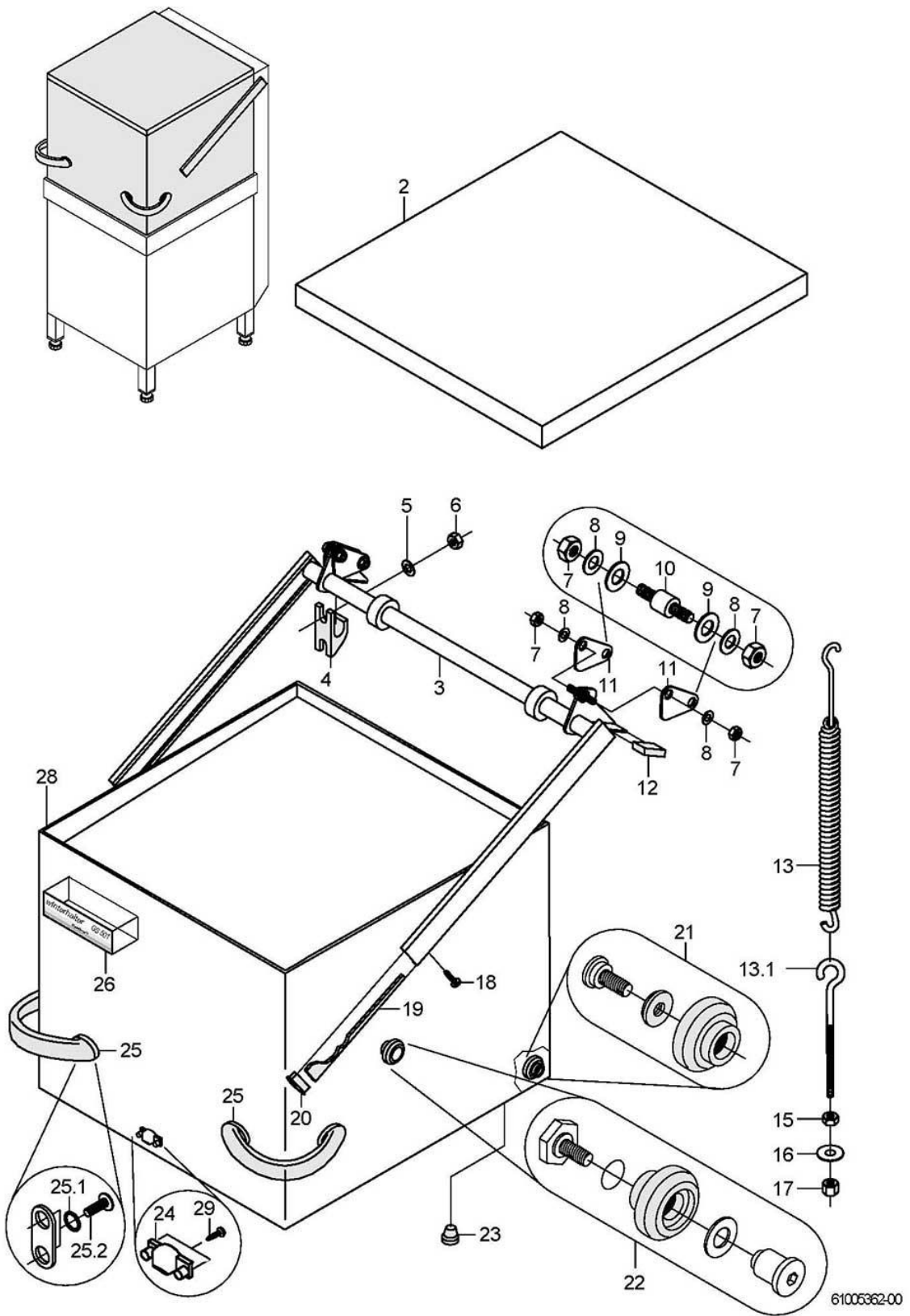
Item.	Designation	Parts no.:	Pc.	Notes
1	Dosing nipple set, M10 X 29; SW5	61005883		incl. item 1.1 - 1.2
1.1	O-ring; 10 X 2,5	27 07 030		
1.2	Wire hose clamp; D8,6 X 1	28 02 348		
4	Wire hose clamp; D8,6 X 1	28 02 348		
7	Hexagonal nut; M4 SELBSTSICHERND	21 05 300	2	to machine no.: 463 833
7	PT screw; KB 50 X 16	20 17 301	2	From machine no.: 463 834
8	Cylinder head screw; M3 X 16	20 09 205		to machine no.: 463 833
9	Coupler piece, insulated; 250V;20AWG;25A;2-POLIG	31 12 021		to machine no.: 463 833
10	Washer; D3,2 X D6 X 0,5	22 02 201		to machine no.: 463 833
11	Hexagonal nut; M3	21 01 301		to machine no.: 463 833
12	ELT 10 replacement set	55 28 278		
13	Container; 3 LITER	35 02 004		incl. item 13.1
13.1	Locking cap blue	35 02 023		bore if necessary
14	Suction stick cpl.	55 25 051		incl. item 14.1 – 14.2
14.1	Wire hose clamp; D8,6 X 1	28 02 348	2	
14.2	Hose; DN5 X 1,5	40 01 024		3500 mm; "By-the-metre" goods
15	Hose; DN5 X 1,5	40 01 024		700 mm; "By-the-metre" goods
16	End cap; D5,7 X 25,4	35 06 180		
17	Bracket; 75 X 82,5	80002906		From machine no.: 463 834
18	Binding post; 5-POLIG; 6QMM; 56,5LG	31 09 230		From machine no.: 463 834



61005361-00

GS 501**Chassis, container and panelling**

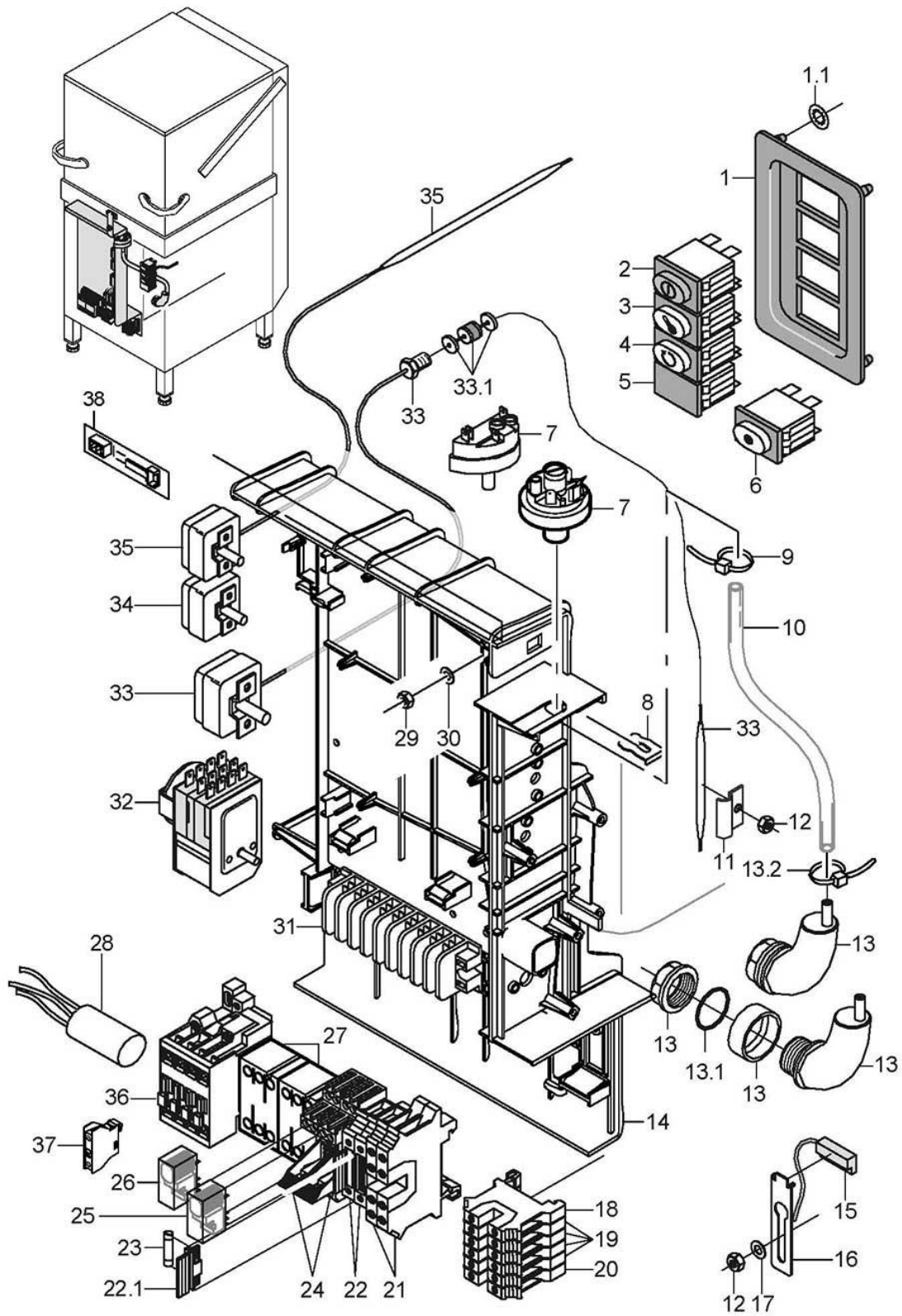
Item.	Designation	Parts no.:	Pc.	Notes
1	Top panelling; 0,8 X 211,5 X 777,2	61004959		
2	Sheet metal screw; ST 3,9 X 13	20 20 310	12	
3	Sheet metal nut; B 3,9	21 17 301	12	
4	Rear wall panelling; 0,8 X 608 X 1210,5	61004902		Option
5	Bracket; 1,5 X 149,9 X 210	61005566		
6	Washer; D6,4 X D18 X 1,6	22 05 302	4	
7	Hexagonal nut; M6 SELBSTSICHERND	21 05 304	4	
8	Membrane spout; 6,0 X D57 X D73; D40	61004889		
9	Membrane spout; 6,0 X 58 X 76; D17	61004891		
10	Hose nozzle; 6,25 X D15; D8,5	61004890	3	
11	Profile seal; D25	40 04 016		1890 mm; "By-the-metre" goods
12	Housing panel right	61005199		to machine no.: 545 310
12	Housing panel right	61006593		From machine no.: 545 311
12.1	Sealing profile; 1,0 - 2,0MM	40 04 006		560 mm; "By-the-metre" goods
13	Truss-head screw with retaining ring; M5 X 15	70005097	6	
14	Threaded insert; RD26 X 1/8; 39 X 59 X85	61004787	4	
15	Foot cleats; RD26 X 1/8; SW40 X 135	61004786	4	
16	Pan head screw; M5 X 16	20 10 224	4	
17	Support; 20 X 7,8 X 27,8	35 01 068	4	
18	Pan head screw; M4 X 30	20 10 316	8	
19	Hexagonal nut; M5	21 01 303	4	
20	Hexagonal nut; M4	21 01 302	8	
21	Cap; D4,8	35 03 012		
22	Front panelling cpl.	61005239		
23	Housing panel left compl.	61005200		incl. item 23.1
23.1	Sealing profile; 1,0 - 2,0MM	40 04 006		560 mm; "By-the-metre" goods
24	Hexagonal nut; M6 SELBSTSICHERND	21 05 304	4	
25	Washer; D6,4 X D18 X 1,6	22 05 302	4	
26	Rack carrier, pre-assembled; KÖRBE 500/WANDABST.170	61006030		Racks 500x500 Wall distance 170mm
26	Rack carrier cpl, 420 rack guide; KÖRBE 420/WANDABST.170	61005682		Racks 420x500mm; Wall distance 170mm
26	Rack carrier cpl, 420 rack guide; KÖRBE 420/WANDABST.235	61005854		Racks 420x500mm; Wall distance 235mm
26	Rack carrier cpl, 420 rack guide; WANDABSTAND 250 MM	61005264		Racks 420x500mm; Wall distance 250mm
26.1	Hexagonal nut; M6	21 01 304	2	
26.2	Guide rail cpl.; 519,27 LG	61004267		
26.3	Buffer; 17,5 X 63 X 63	61005559		
26.4	Spring washer; B6	23 03 300	2	
27	Guiding pin cpl.	61005090		Corner version
28	Roller set cpl.	61005206		for both sides; up to mach. no.: 408 497 (ca. 11/99) order 2 bushings 61004843 in addition
29	Snap-in passage; D23,8	31 10 144		
30	Plug; 6,5 X 14 X 59	61006152		
31	Buffer	61005256		
32	Kit steam elbow	80003539		
o.P.	Kit working height elevation to 900mm	80003174		
o.P.	Kit working height elevation to 950mm	80003175		



GS 501

Hood

Item.	Designation	Parts no.:	Pc.	Notes
2	Hood panelling; 1,0 X 711,2 X 712	61004958		
3	Lever	61004854		
4	Door lever bearing; 70 X 21 X 39,25	35 01 066	4	
5	Washer; D8,4 X D17 X 1,6	22 01 303	8	
6	Hexagonal nut; M6 SELBSTSICHERND	21 05 304	8	
7	Hexagonal nut; M8 SELBSTSICHERND	21 05 306	8	
8	Washer; D8,4 X D17 X 1,6	22 01 303	8	up to 10/2003
9	Washer; D10,5 X D18 X 1,6	22 02 206	4	
10	Shaft; D10 X 34	61005054	4	
11	Lug; 2,0 X 45,2 X 81,6	61005055	4	
12	Buffer; 14 X 28 X 31	61005067	2	
13	Set tension spring; L0=696;L1=951;F1=1280	61006635	2	Spring clamp 88000468 necessary to replace the cover tension springs
13.1	Eye screw; M10 X 150	61002816	2	
15	Hexagonal nut; M10	21 02 306	2	
16	Washer; D10,5 X D30 X 2,5	22 02 304	2	
17	Hexagonal nut; M10	21 01 006	2	
18	Raised head screw with internal hexagon; M6 X 12 MIT FLANSCH	20 10 002	2	
19	Locking brake; 14 X 15 X 121	61005048	2	
20	Plug; 21 X 26 X 55	61004866	4	
21	Roller set cpl.	61005202		to machine no.: 408 497; for both sides
21	Roller set cpl.	61005333		2 rollers; from mach. no. 408 498
22	Roller set cpl.	61005203		for both sides
23	Cap; D4,8	35 03 012	4	
24	Magnet holder; 12,9 X 15 X 40	61006243		incl. magnet
25	Handle cpl.	61005204	2	incl. item 25.1 – 25.2
25.1	O-ring; 6,5 X 2,5	27 07 063	8	
25.2	Raised head screw with internal hexagon; M6 X 12 MIT FLANSCH	20 10 002	8	
26	Plate -Winterhalter GS 501-; 0,175 X 35 X 126	61006609		
28	Hood cpl.	61005323		to machine no.: 470 791
28	Hood	61006040		From machine no.: 470 792
29	Plate screw; ST 3,9 X 9,5	20 20 307	2	



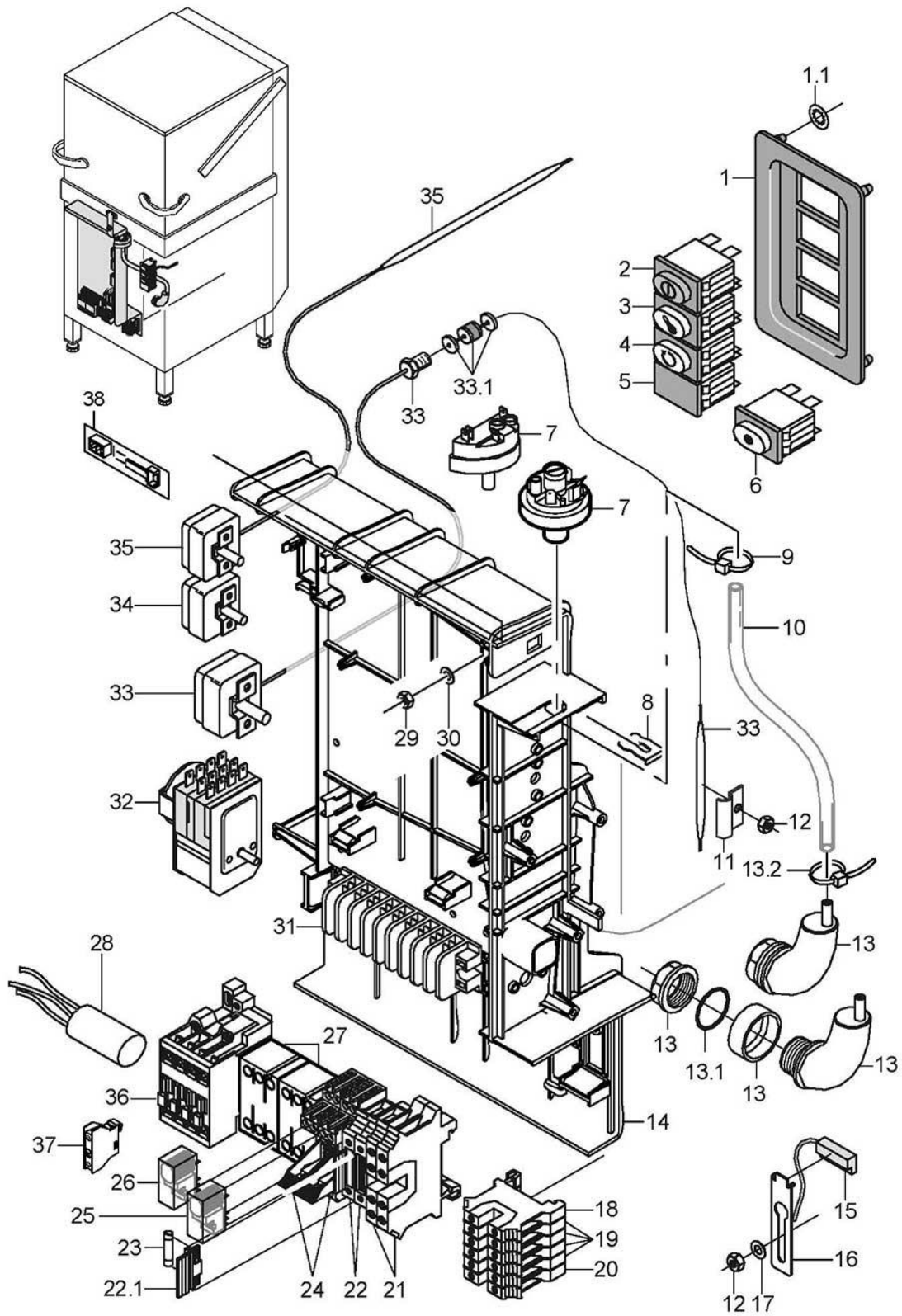
61005363-06

GS 501

Electric parts

Item.	Designation	Parts no.:	Pc.	Notes
1	Switch panel	61005270		incl. item 1.1
1.1	Spring nut; D4 X 9	28 04 030		
2	Pressure switch "ON/OFF" - "H"; 250V; AC; 2-POL; IP54	31 24 185		
3	Lamp with extinction resistor; 230V; IP54	31 08 116		
4	Wash cycle lamp; 230V; AC; IP54	31 08 064		
5	Blind cover	31 24 187		
5	Pressure switch "relief valve"; 250V; AC; 2S/2Ö; IP54	31 24 227		with drain pump
6	Pressure switch -Progr. 1-; 250V; AC; 2-POL; IP54	31 24 165		
7	Level control; 250V/50-60HZ	80003155		160/80
8	Retaining spring for leveller	31 26 001		
9	Cable tie; 100 X 2,5	31 20 175	2	
10	Hose; DN5 X 1,5	40 01 024		320 mm; "By-the-metre" goods
11	Thermostat clamp; 0,8 X 28 X 50	55 19 011	2	
12	Hexagonal nut; M5 SELBSTSICHERND	21 05 302		
13	Air chamber cpl.	55 04 024		incl. item 13.1 - 13.2
13.1	O-ring; 24 X 3,0	27 07 087		
13.2	Wire hose clamp; D8,6 X 1	28 02 348	2	
14	Assembly plate; 129 X 293 X 491,22	61005381		not exchangeable with CN assembly plate
15	Magnetic switch; 32X14,9X6,9; 700 LG	31 24 228		
16	Bracket; 5,0 X 20 X 72	61005446		
17	Washer; D5,3 X D15 X 1,2	22 05 301		
18	Twin terminal, blue	31 09 223		
19	Twin terminal, grey	31 09 222	4	
20	Double terminal, UK, 10-Twin-PE	31 09 224		
21	Earth conductor terminal green/yellow	31 09 120	2	

For missing items, see next page

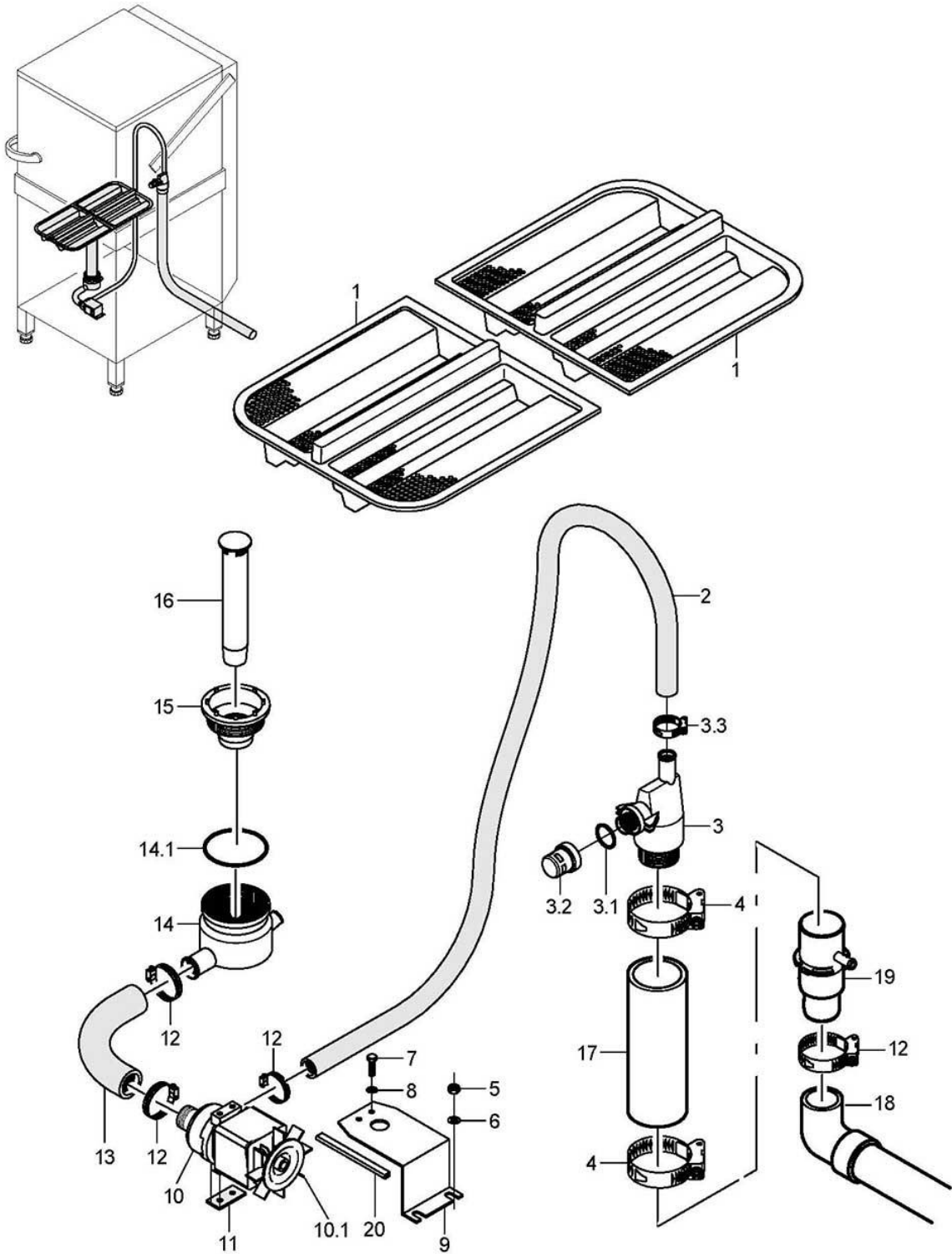


61005363-06

GS 501

Electric parts

Item.	Designation	Parts no.:	Pc.	Notes
22	Universal fuse clip	31 09 063	2	incl. item 22.1
22.1	Securing plug	31 09 072	2	
23	Fine fuse, medium time lag; 250V; 6,3A; 5 X 20	31 11 043		
24	Socket, snap fixture; RASTER 5,0	31 04 157	2	
25	Print relay 2 changer; 230V AC; 5A; RASTER 5,0	31 04 196		
26	Print relay 1 changer; 230V AC; 16A; RASTER 5,0	31 04 158		to machine no.: 464 564; for pump and tank heating
27	Contactors; 230V/50-60 HZ	31 04 128	2	From machine no.: 464 565; for pump and tank heating
27	Contactors; 200V/50-60HZ	31 04 177	2	Japan
28	Radio interference suppression capacitor; 0,27MF + 2 X 27000PF	31 13 078		
29	Hex nut; M4	21 02 302		
30	Washer; D4,3 X D12 X 1,0	22 05 300		
31	Terminal strip; 9-POLIG	31 09 155		
32	Programme switch installation set	55 28 272		
32	Programme switch 1+2 minutes; 180-265V; 50-60HZ	31 05 144		Asia 50Hz
33	Thermostat	31 25 011		Tank
33.1	Gland screwing	31 25 012		
34	Thermostats installation set	55 28 271		boiler; to machine no.: 423 783
34	Thermostat; 710 LG; 93 GRAD C AUS	31 25 046		boiler; From machine no.: 423 784
35	Thermostats installation set	55 28 271		fill tank; to machine no.: 423 783
35	Thermostat 1W; 710 LG; 93 GRAD C AUS	31 25 047		fill tank; From machine no.: 423 784
36	Contactors A16:3S: 1 N/C contact; 230V/50-60HZ; 7,5KW	31 04 162	2	
36	Contactors A16:3S: 1 N/C contact; 200V/50-60HZ; 7,5KW	31 04 163	2	Japan
37	Auxiliary switch, 1 N/C contact	31 04 167		Alternating current
38	Level sensor, electronic; 230V; 230V	31 13 165		From machine no.: 479 003
o.P.	Wire set "control"; 0,75QMM	61005217		to machine no.: 430 574
o.P.	Wire set Control; 0,75QMM	61005683		From machine no.: 430 575
o.P.	Operating panel wire loom; 0,75QMM	61005684		



61005364-01

GS 501

Drain pump (optional)

Item.	Designation	Parts no.:	Pc.	Notes
1	Flat filter; 60 X 273 X 291	61004907	2	
2	Hose elbow; DN24X4,0;55X890	61005049		
3	Outlet	61005185		incl. item 3.1 – 3.3; 4.1
3.1	O-ring; 29,5 X 4,5	27 07 008		
3.2	Cap; G 3/4" X 24; SW32	61004974		
3.3	Hose clamp; D24-36 X 12	28 02 111		
4	Hose clamp; D47-67 X 12	28 02 115		
5	Hexagonal nut; M5 SELBSTSICHERND	21 05 302		
6	Washer; D5,3 X D15 X 1,2	22 05 301		
7	Hexagon screw; M6 X 10; A70	20 01 332	2	
8	Spring washer; B6	23 03 300	2	
9	Holder; 1,5 X 110,84 X 253,66	61005154		
10	3/0 lye pump; 200-240V/50-60HZ	31 02 410		incl. item 10.1
10.1	Fan blade	31 02 431		
11	Spacer; 3,0 X 16 X 46	61006026		
12	Hose clamp; D32-52 X 12	28 02 110		
13	Hose bend; DN24 X 4,0	61005028		
14	Sump pot	61005186		incl. item 14.1
14.1	O-ring; 91 X 3,5	27 07 075		
15	Sump drain set	61006178		
16	Stand pipe; ÜBERLAUFHÖHE 358	61004900		
17	Moulded hose; DN49 X 4,0	61005530		
18	Replacement set drain hose	55 28 287		to machine no.: 488 266
18	Drain hose; D40; 1500 LG	61006446		From machine no.: 488 267
19	Double nipple; D51 X 124; D40	61006227		From machine no.: 488 267
20	Edge protection profile; U9,5 X 2,0	40 04 015		140 mm; "By-the-metre" goods
o.P.	Drain pump wiring loom; 3 X 0,75QMM; 850 LG	61005211		
o.P.	Drain pump wire; 0,75QMM	61005210		
o.P.	Drain pump installation set	55 28 262		